

# welcome

Our insight publication is designed to showcase some of the projects we have been working on, some new initiatives and offer a few ideas.

Getting photos for some of our projects can prove to be a challenge, especially when the clients include royalty, celebrities and multi-millionaires.

So, whilst we would love to tell you everyone we have helped, the best we can do is give you an insight with some of the prestigious addresses.

## prestigious addresses

Eaton  
Square  
**London**

Cadogan  
Square  
**London**

Charles  
Street  
**London**

Tregunter  
Road  
**London**

The Grove  
**London**

Queens  
Crescent  
**Gleneagles**

Trevor  
Place  
**London**

Queens  
Gate  
**London**

Belgrave  
Square  
**London**

Bishops  
Avenue  
**London**

The Boltons,  
Kensington  
**London**

Hyde Park  
Gate  
**London**



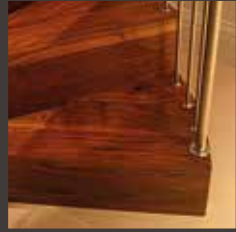
## 2 Storey Spiral Staircase for Manse Refurbishment

Materials: American White Oak  
Client: Private Individual

This bespoke American white oak spiral staircase rises through 2 flights, features 32mm solid oak treads measuring 1000mm, 170mm diameter solid oak spacer components and was designed to provide a 20mm clear space from the treads to the wall.

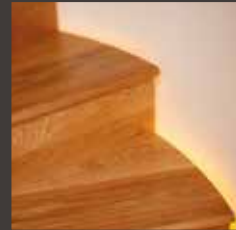
Haldane also manufactured and supplied 10.5 linear metres of 60x50mm elliptical spiral handrail which was fixed to the wall via brackets and finished with a bullnose end.





## treads

Our experience in manufacturing is unparalleled in the industry. Every tread is machined on one of our 3 axis or 5 axis CNC machines before being hand finished by highly skilled tradesmen to ensure they meet the company's rigorous quality standards.





## Fantail Staircase for Luxury Home

Material: American White Oak

Client: Private Individual

Haldane has manufactured and installed this elegant fantail staircase featuring a continuous handrail, open stringer and decorative metal balustrading for a luxury new home in Scotland. The staircase is defined by the large bullnose treads which flare out at the foot of the staircase, before sweeping up to the curved gallery area.



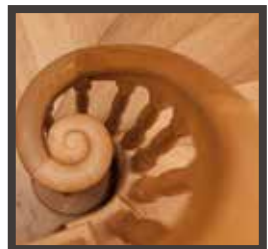




finishing  
touches

There are many ways to make an impact with your staircase. Whether it's via the handrail profile, sweeping bends, twists or volutes, we have the skills, expertise and experience to deliver exactly what you require.

Visit [www.haldaneuk.com](http://www.haldaneuk.com) to view our range of handrail profiles.



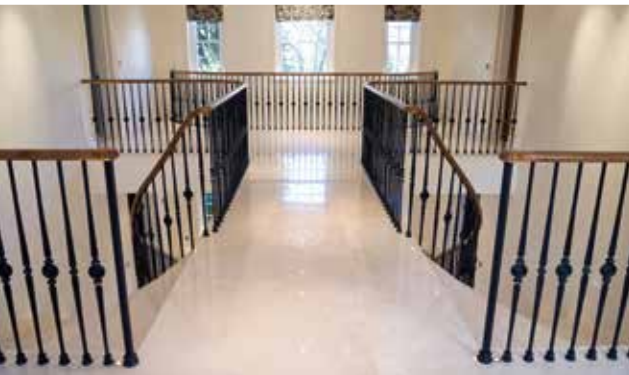


## American Black Walnut Handrails for Luxury Home

Materials: American Black Walnut  
Client: Hollywell Building Services

Haldane manufactured a combination of straight, spiral and horizontal curved handrails joined with various transitions and finished with scrolled, bun and drop ends.

The marble double staircase which leads up to the stunning gallery area features over fifty linear metres of 60x40mm elliptical handrail atop bespoke metal balustrades.



# Discover more at [www.haldaneuk.com](http://www.haldaneuk.com)

Our insight publication is designed to give you a snapshot of what we have achieved in recent months across the full range of our timber machining capabilities.

For more information about any of our services, download our brochure and to view the full portfolio, visit our NEW website at [www.haldaneuk.com](http://www.haldaneuk.com)



# Haldane

## Haldane (UK) Ltd.

Blackwood Way  
Bankhead Industrial Estate Glenrothes  
Fife KY7 6JF  
Tel: 01592 775656 Fax: 01592 775757

## London Office

33-35 Daws Lane,  
London  
NW7 4SD  
Tel: 020 8906 6770

Email: [sales@haldaneuk.com](mailto:sales@haldaneuk.com) | [www.haldaneuk.com](http://www.haldaneuk.com)



TT-COC-02181  
© 1996 Forest Stewardship Council A.C.

By buying products with the FSC label we are supporting the growth of responsible forest management worldwide



PEFC 16-13-350  
BMT-PEFC-0436





## Recreation of Victorian Staircase

Materials: Douglas Fir

Client: Private Individual

Haldane has manufactured and installed an authentic Victorian staircase right down to recreating the original mouldings thanks to drawings supplied by the Royal Commission on the Ancient and Historical Monuments in Scotland.

The 180 degree staircase, manufactured from Douglas Fir, winds up onto a large half landing and features a bespoke profile handrail, 55mm spindles, 110mm newel posts and a double bullnose step with a wreathed handrail to create the perfect finish.

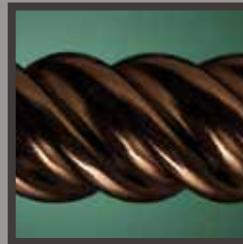
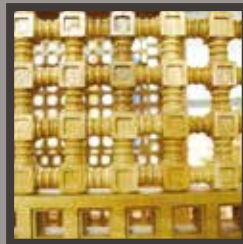






specialist  
turnings

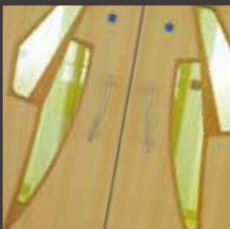
From table legs to feature columns and from corbels to packaging, our specialist turning and timber machining has helped countless shop fitting and specialist joinery companies to deliver their high quality solutions. Whilst we don't often get access to take photography on site, we have taken our own shots of the components.





glazing beads  
& windows

Our expertise in timber machining means that, not only can we tackle virtually every glazing bead, in any design, shape or timber, but we are now extending this further to produce large bullseye windows and a few bespoke timber windows as well.





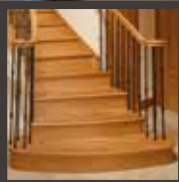
commercial  
& leisure

Our client portfolio contains some of the best known companies in the world, and we are proud to see that our work continues to be in demand by some of the biggest establishments in the UK.





Haldane



insight

